

Autres solutions de contrôle à distance d'utilisation gratuite

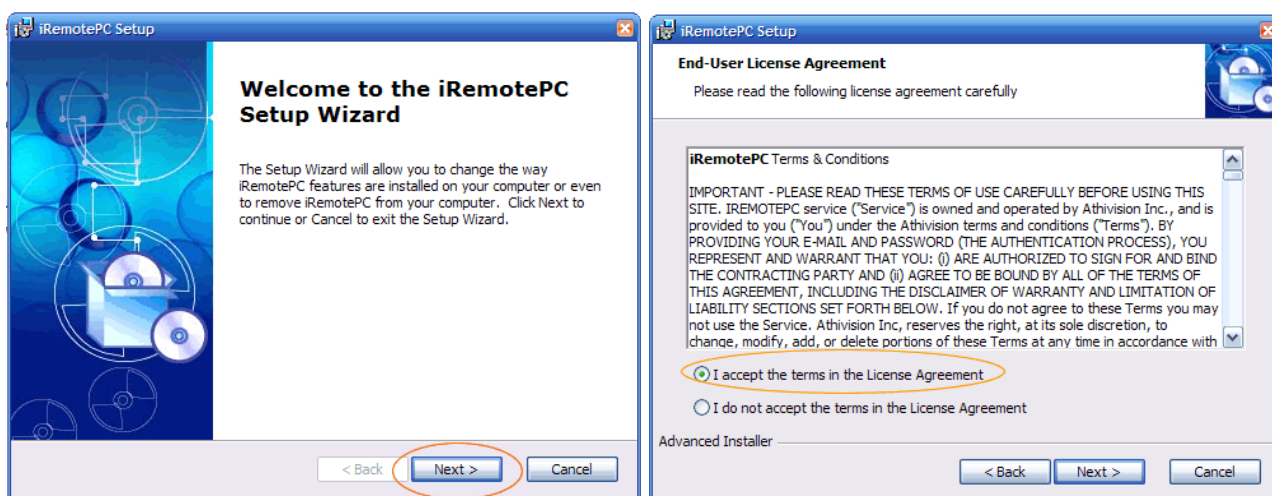
iRemotePC

iRemotePC est téléchargé depuis le site <https://www.iremotepc.com/download.html>. Le logiciel peut être employé gratuitement pour une utilisation non commerciale.

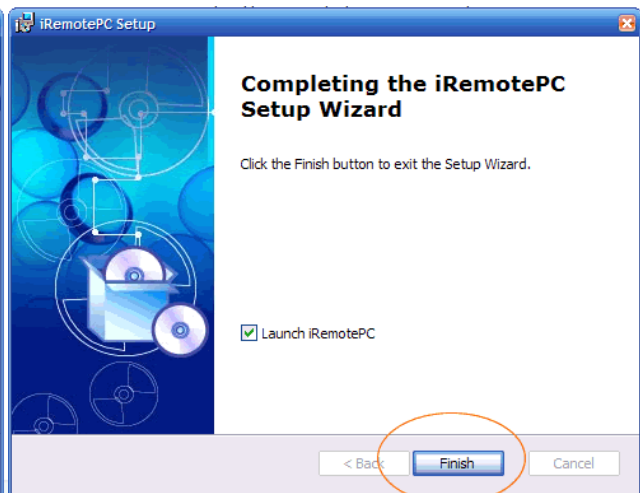
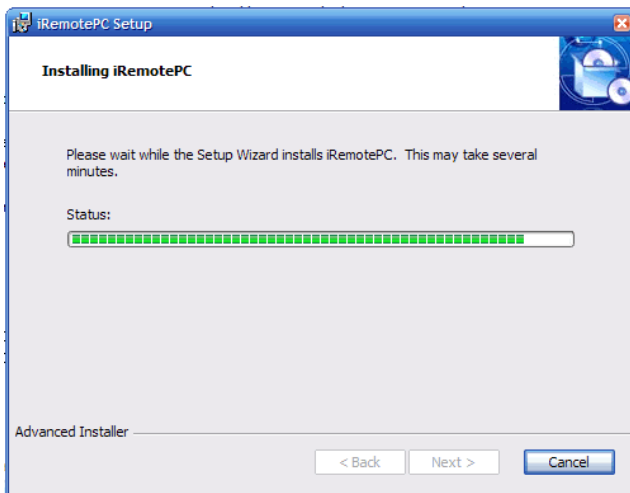
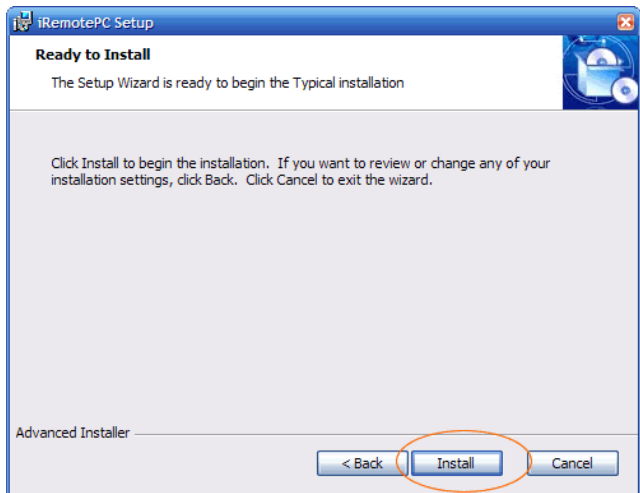
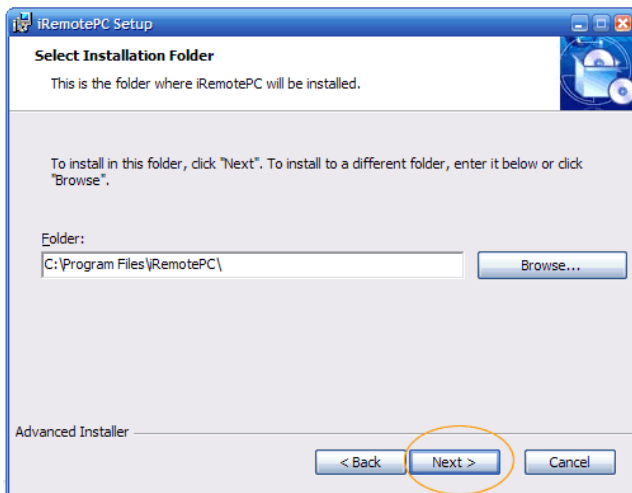


The screenshot shows the iRemotePC website homepage. At the top, there is a blue navigation bar with the iRemotePC logo on the left and the text "FREE Remote Desktop Access and File Transfer service" on the right. Below the navigation bar, there are links for "HOME", "REMOTE SUPPORT", "FORUM", "HELP", "FAQ", "DOWNLOAD", and "CONTACT US". The main content area features a headline: "Absolutely FREE remote desktop and file transfer access for your PCs. No questions asked." Below this, it states "Creating a new user account is just a few steps away:" followed by a numbered list of five steps: 1. Download and install iRemotePC on your PC by clicking the below download button. 2. When you first run the application, you will see a Registration screen. 3. Click the "New iRemotePC User" button on the screen if you are a new user. 4. Enter your primary email address and password to create a new iRemotePC account. 5. Login to www.iRemotePC.com using any web browser from anywhere to start accessing your PCs. A prominent blue button with a download icon says "CLICK HERE TO DOWNLOAD" and "Free 2 PCs!". Below the button, it specifies "(Current version: v1.4) PC Requirements: Windows 2000, XP, 2003 all editions" and "Contains NO Adware or Spyware!". There is also a small logo that says "NO SPYWARE NO ADWARE NO VIRUSES CERTIFIED BY TOPSHAREWARE.COM". At the bottom, it says "Optional: Click here to download our iRemotePC MSI Installer!".

Le processus d'installation est traditionnel :

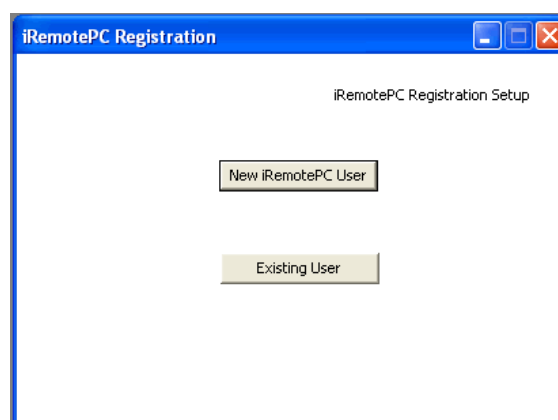


The image shows two screenshots of the iRemotePC installation wizard. The first screenshot is the "Welcome to the iRemotePC Setup Wizard" screen. It features a blue background with a gear and a document icon. The text reads: "The Setup Wizard will allow you to change the way iRemotePC features are installed on your computer or even to remove iRemotePC from your computer. Click Next to continue or Cancel to exit the Setup Wizard." At the bottom, there are three buttons: "< Back", "Next >", and "Cancel". The "Next >" button is circled in orange. The second screenshot is the "End-User License Agreement" screen. It has a white background with a blue header. The text says: "Please read the following license agreement carefully". Below this is a scrollable text area containing the "iRemotePC Terms & Conditions". The text in the scroll area is: "IMPORTANT - PLEASE READ THESE TERMS OF USE CAREFULLY BEFORE USING THIS SITE. IREMOTEP service ("Service") is owned and operated by Athivision Inc., and is provided to you ("You") under the Athivision terms and conditions ("Terms"). By PROVIDING YOUR E-MAIL AND PASSWORD (THE AUTHENTICATION PROCESS), YOU REPRESENT AND WARRANT THAT YOU: (i) ARE AUTHORIZED TO SIGN FOR AND BIND THE CONTRACTING PARTY AND (ii) AGREE TO BE BOUND BY ALL OF THE TERMS OF THIS AGREEMENT, INCLUDING THE DISCLAIMER OF WARRANTY AND LIMITATION OF LIABILITY SECTIONS SET FORTH BELOW. If you do not agree to these Terms you may not use the Service. Athivision Inc. reserves the right, at its sole discretion, to change, modify, add, or delete portions of these Terms at any time in accordance with". Below the scroll area, there are two radio buttons: "I accept the terms in the License Agreement" (which is selected and circled in orange) and "I do not accept the terms in the License Agreement". At the bottom, there are three buttons: "< Back", "Next >", and "Cancel".

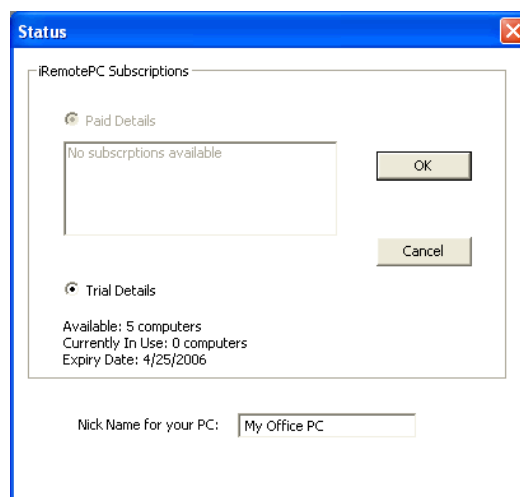
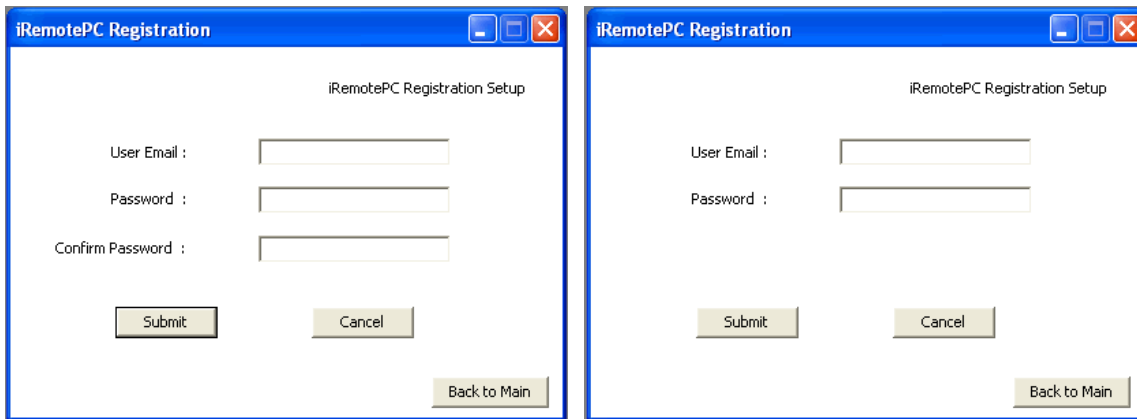


L'installation terminée, il est nécessaire d'enregistrer l'ordinateur sur lequel vous venez d'installer le logiciel et de s'inscrire sur le site www.iremotepc.com pour bénéficier de l'offre gratuite.

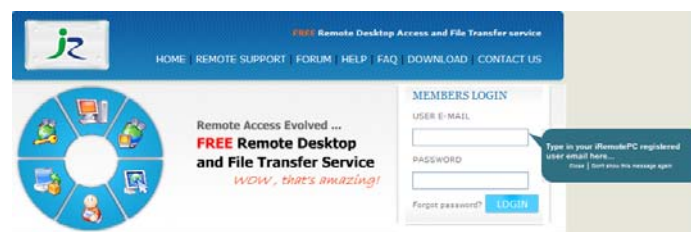
Cette inscription est lancée automatiquement au premier lancement du logiciel. La fenêtre suivante s'ouvre:



Selon que vous êtes un nouvel utilisateur ou un utilisateur déjà enregistré, vous complétez les demandes de renseignements correspondantes :



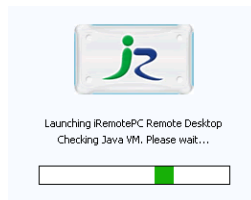
Une fois enregistré, vous pouvez consulter l'état de votre compte au moyen de n'importe quel navigateur Internet depuis le site <https://www.iremotepc.com/index.html> :



Après avoir complété les renseignements communiqués au moment de votre inscription initiale - email et mot de passe - vous accédez à la fenêtre qui affiche les différents ordinateurs accessibles :

Pour se connecter avec l'un des ordinateurs enregistrés, il suffit de cliquer sur cet ordinateur :

Une connexion sécurisée est lancée :



Host Time: 18:02:52

Welcome to your computer!

Current Remote CPU Load : 0%

Quick Tips to get started! Click on the left menu respectively

Feature	Description
Remote Control	Full 32 bit view of your remote PC with keyboard/mouse control
File Transfer	Transfer files back and forth between your local and remote PC
Monitor PC	32 bit view of your remote PC but with no keyboard or mouse controls
IE Favorites	Browse through your IE Favorites and view them locally!
Chat	Have a one-on-one chat with the person sitting at the remote PC
Share Files via Email	Share files to your friends/colleagues directly from your remote PC
Remote Reboot	Restart iRemotePC or reboot your PC from the web!
Computer Management	View remote PC diagnostics such as: Available disk space, Shared files/folders, PC time, Add/Delete PC users, Running Processes, Processes Performance, DLL's currently in use, Running Services, Devices, Active Ports, Scheduled Tasks, Installed Applications, Environment Variables, Registry, and Event Viewer

Quick Help Guide

- [8 Steps to Using RemotePC](#)
8 simple steps to use iRemotePC
- [Sharing Files from your PC](#)
We show you how simple it is for you to share files directly from your PC to your friends or colleagues
- [Inviting a Guest to your PC](#)
We show you how to Invite guests to your PC to partake in business presentations or have a support personnel help you with your PC

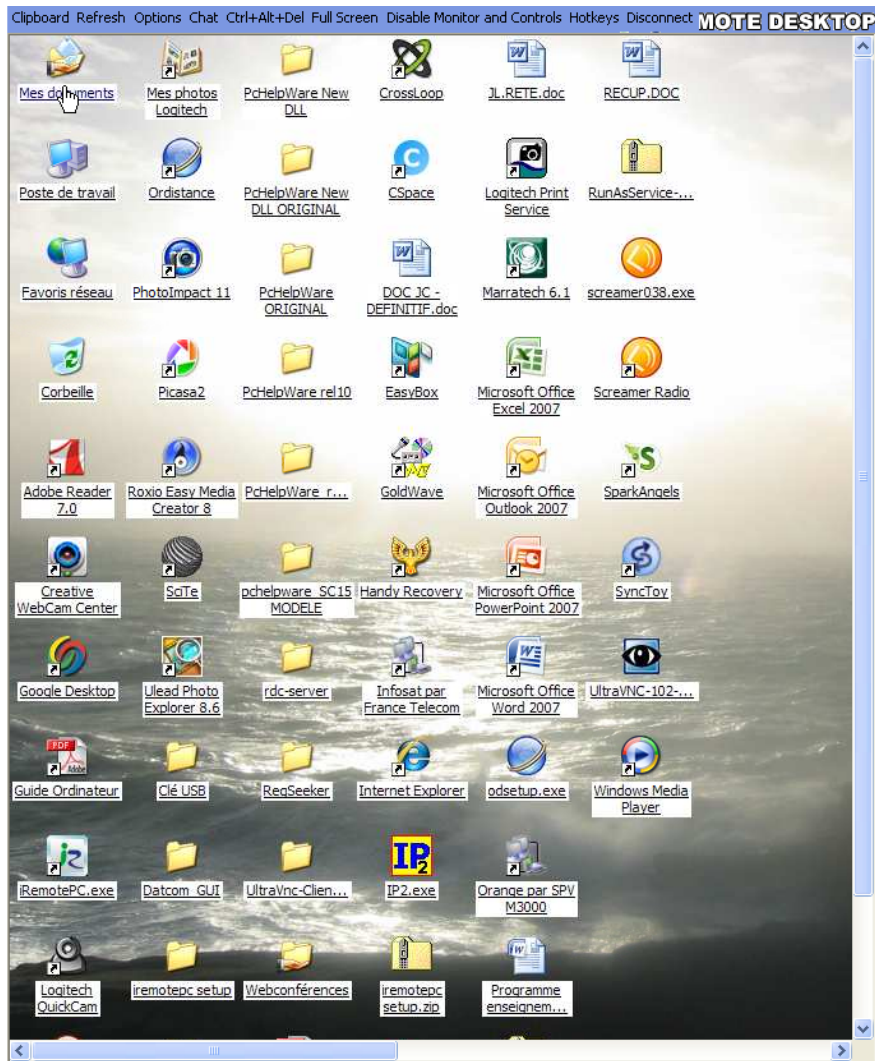
Log Off

REMOTE ACCESS EVOLVED

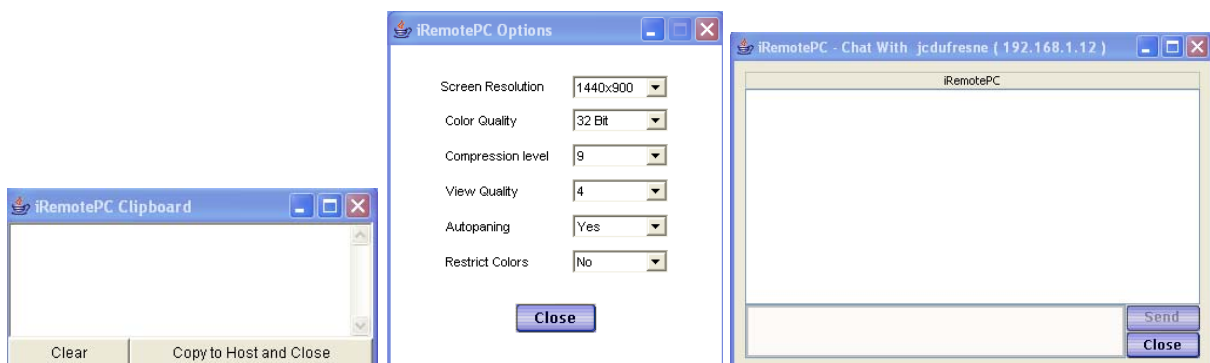
Lancer la commande Remote Control pour prendre le contrôle de l'ordinateur auquel vous êtes connecté et entrer le mot de passe enregistré :



L'écran de l'ordinateur contrôlé apparaît :



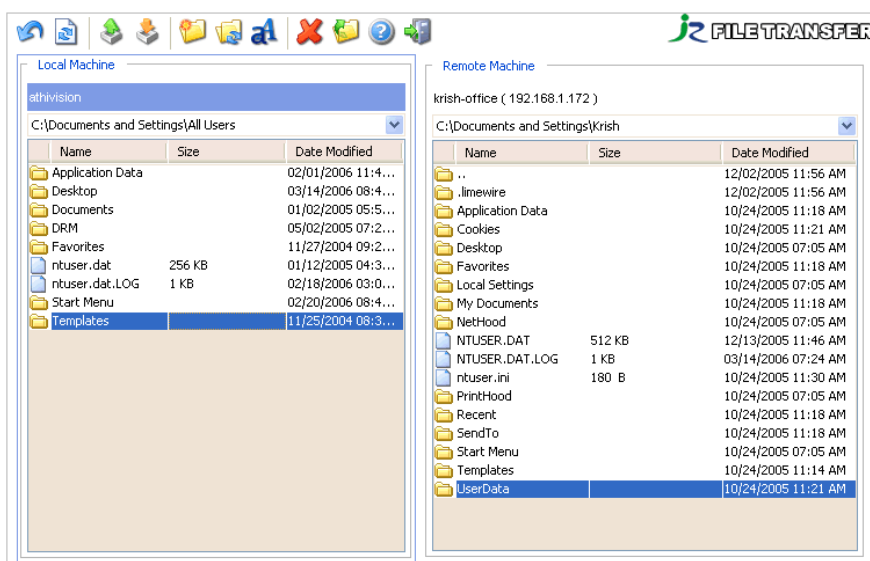
On utilise les barres de défilement pour afficher les différentes parties de l'écran. En haut de l'écran, apparaît les différentes commandes associées : **Clipboard, Refresh, Options, Chat, Ctrl+Alt+Del, Full Screen, Disable Monitor and Controls, Hotkeys** et **Disconnect** :



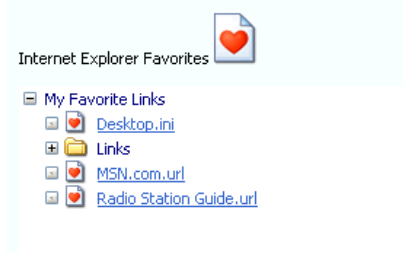
Pour accéder au module **File Transfer** qui vous permet d'échanger des fichiers entre l'ordinateur contrôlé et l'ordinateur à partir duquel le contrôle est réalisé, le même mot de passe vous est demandé :



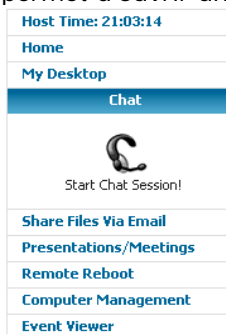
Depuis les commandes du menu situé au sommet de la fenêtre **File Transfer**, vous réalisez toutes les opérations classiques liées à l'organisation des fichiers des deux ordinateurs : chargement de fichier, création et synchronisation de répertoires, attribution de nouveau nom à un fichier, suppression et déplacement d'un fichier :



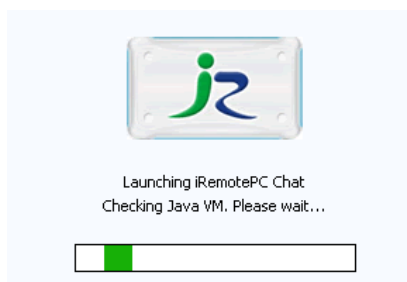
La commande **IE Favorites** donne accès à vos sites web enregistrés :



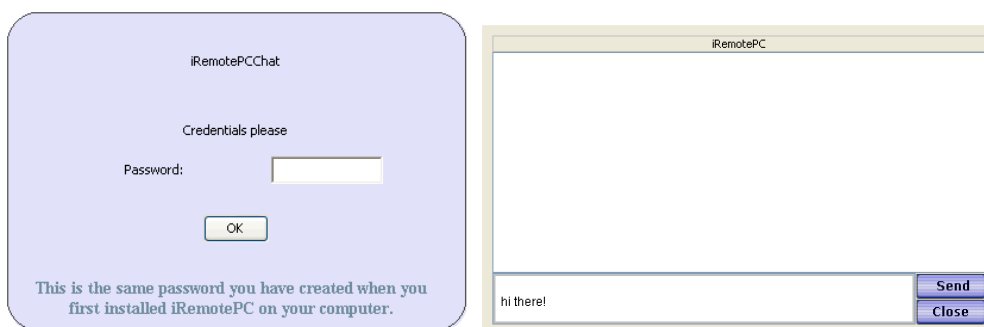
La commande **Chat/Start Chat Session!** permet d'ouvrir une session de Chat :



iRemotePC vérifie que l'application Java nécessaire au fonctionnement du module - version 1.4 ou version plus récente - est installée sur votre ordinateur :



L'applet Java est chargé éventuellement et le même mot de passe vous est demandé pour accéder à la fenêtre de Chat :



La commande **Reboot** donne accès à un menu permettant de lancer différentes opérations de redémarrage de l'ordinateur distant :



The iRemotePC Advantage

Feature	FREE	PREMIUM
Full-Featured Remote Desktop	✓	✓
File Transfer w/ Synchronization	✓	✓
Advanced Computer Management	✓	✓
Quick Access to IE Favorites	✓	✓
Unlimited Remote Reboots	✓	✓
Interactive Chat	✓	✓
Usage History & Detailed Auditing	✓	✓
Extra Security Protection	✓	✓
Secondary Users Functionality	✓	✓
Invite Guests to PC	✗ 5 Invites trial	Unlimited
Share Files directly from Desktop	✗ 5 Shares trial	Unlimited
Remote Monitoring	✗	✓
24 Hour Guaranteed Support Response time	✗	✓
Max. Number of PCs	2	Unlimited \$7.95/month each PC

Avantages : facilité d'utilisation du module Transfert de fichiers, application tournée vers le contrôle de votre ordinateur depuis un poste distant

Inconvénients : chargement du logiciel au démarrage de Windows pour être connecté, impossibilité de connecter plus de deux ordinateurs

Site Web : www.iremotepc.com

Jean-Claude Dufresne

jcdestinator@gmail.com

Avril 2007

Droits réservés
Impression
Mot de passe : jcd